



STÖLZLE GLASS GROUP



YOUR PRESTIGE GLASS PARTNER

DR. CORNELIUS GRUPP

Dates, facts & figures

Group of Companies



TYPE OF GLASSES

Type 1 and Type 3 Glass



⇒ We offer containers with good seals to prevent / limit evaporation

⇒ We offer container easy to open and to reseal

WHAT ARE THE DIFFERENCE IN TYPES

Type 1

- + made from borosilicate
- + highly resistant composition
- + releases the least amount of alkali
- ⇒ used for pharmaceutical or fine chemical products that are sensitive to PH changes.

Type 3

- + made of soda-lime glass
- + average or above average chemical resistance
- ⇒ most common in use compatible with most items such as: food; beverages; common chemicals

WHAT ARE THE DIFFERENCE IN TYPES

Type 1

- + more expensive
- + thinner walls
- + flexible height

vs.

Type 3

- + relatively cheap
- + thicker walls
- + limitation in height

EXISTING SIZES CURRENTLY TYPE 1 ON STOCK

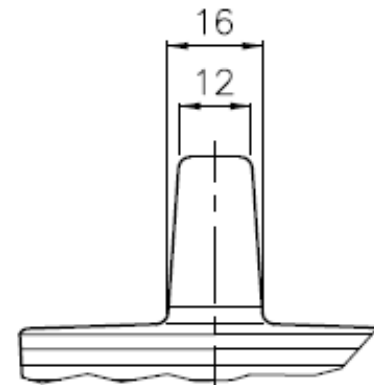
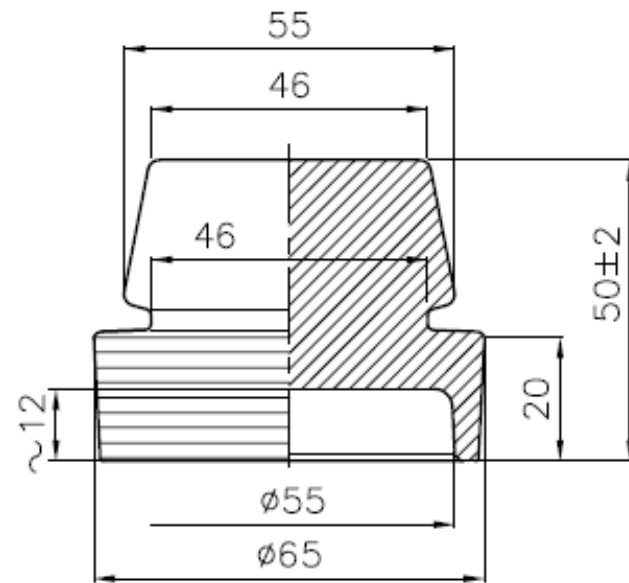
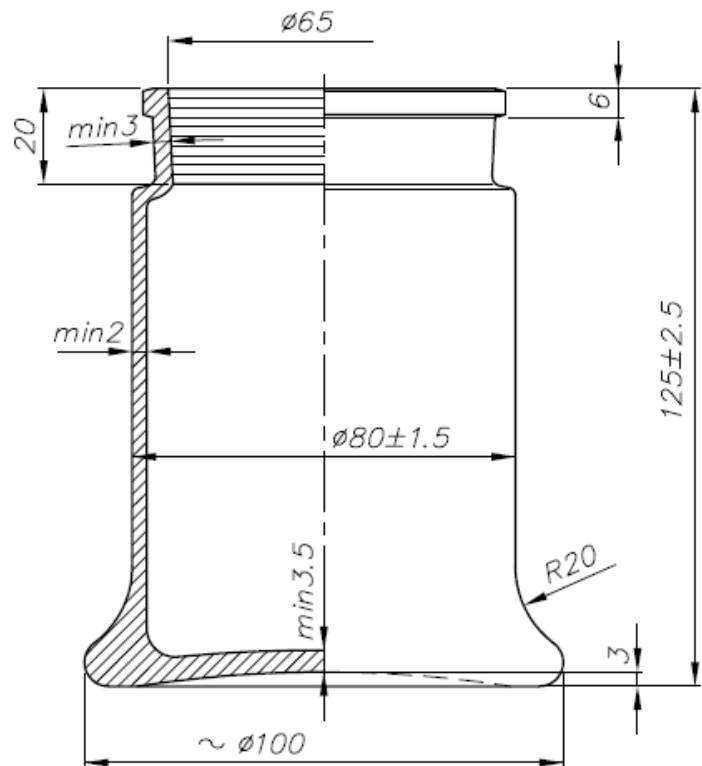
H / DM	60	80	125	150	200	250	400	450	600
50									
80			X						
100					X				
150							X		
200									X

New production MOQ between 200 and 250 pcs

Bespoke made glasses =>  Mouldset & MOQ



TYPE 1 CONTAINERS WITH STOPPERS



AVAILABLE MOULD SETS TYPE 1 WITH STOPPER

H / DM	60	80	125	130	200	300	400	500	600
50	X								
80		X							
100								X	
150				X		X			
200					X				

New production MOQ between 200 and 250 pcs

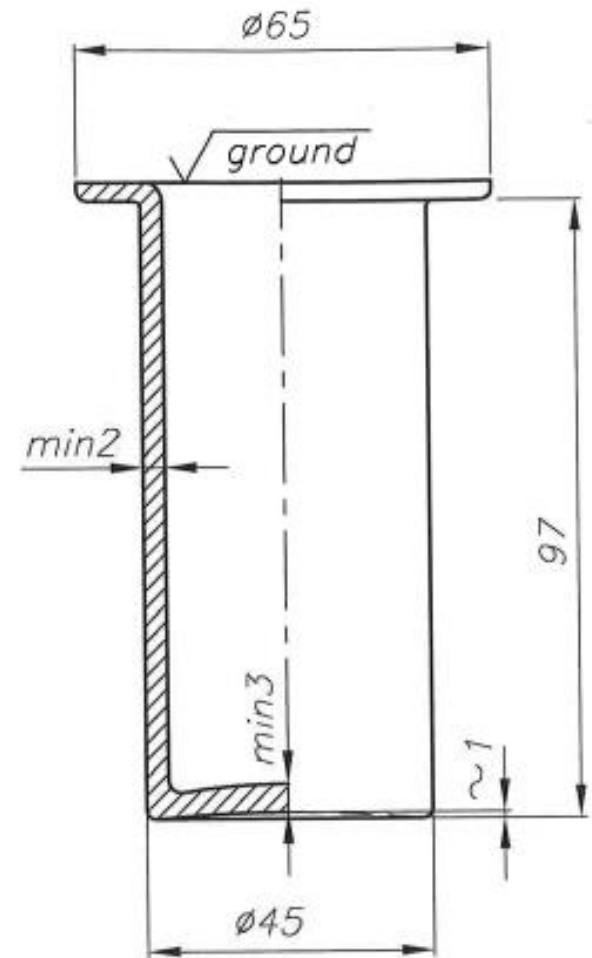
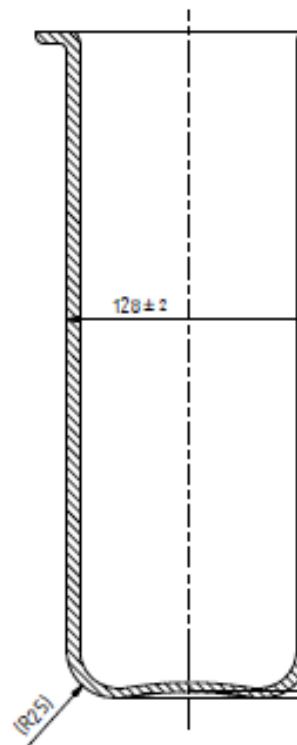
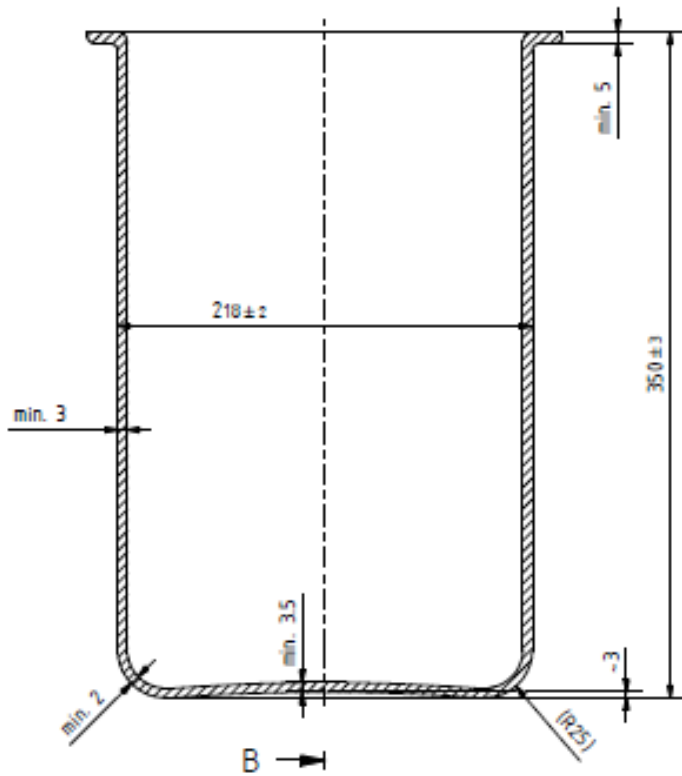
AVAILABLE MOULD SETS TYPE 1 WITH FLANGE / SEALED WITH BEESWAX

H / DM	100	130	210	300	200	300	420
45	X						
45		X					
250				X			
330x210x420			X				X

New production MOQ between 200 and 250 pcs



TYPE 1 CONTAINERS WITH FLANGE

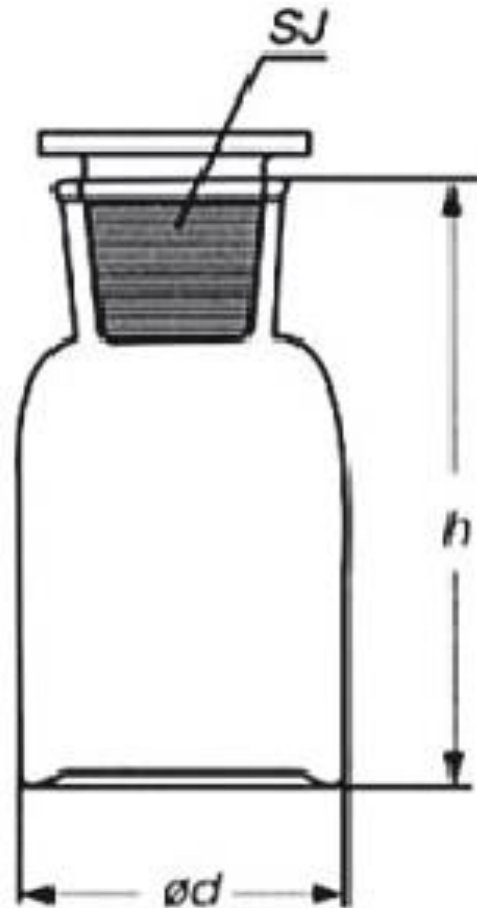


AVAILABLE SIZES TYPE 3


H / DM	41,5	52,5	69	85	106,5	132
76 mm/ 50ml	X					
95 mm/ 100ml		X				
128mm/ 250ml			X			
162 mm/ 500ml				X		
187 mm/ 1000ml					X	
238 mm/ 2000ml						X



REAGENT BOTTLES WIDE MOUTH, GROUND IN FLAT STOPPER



POSSIBLE NEXT STEPS

- Evaluation if a common need among the museums exists in order to enable production
- Evaluation if additional sizes and shapes are needed/ bespoke made glasses  Mould set to be produced/ Lead time/ MOQ
- Yes => Stölzle provides Museum with drawings and offer



STÖLZLE GLASS GROUP

Contact

Antonia Karamat
STÖLZLE-OBERGLAS GmbH
Keisslergasse 26
1140 Wien, Austria

Phone: +43 1 415 65 751

E-Mail: antonia.karamat@stoelzle.com

www.stoelzle.com